

# WALCOT FOUNDATION

We are an **independent** grant-making foundation dating from the 17th century and operating exclusively in **Lambeth**. We **fund activity** that helps improve the **future prospects** of those on the lowest incomes. Our aim is to **break cycles of deprivation** and to **tackle poverty by creating opportunity** through education, training and employment.

C H A N G I N G   L A M B E T H   L I V E S

walcotfoundation.org.uk

Some of the charities  
associated with our  
present day Foundation

Roger Jeston 1622, Noel Caron 1623,  
Alice Easton 1640, William Hind 1655,  
Edmund Walcot 1667, Robert Hayle 1671,  
Margaret Oakley 1672, Thomas Rich 1672,  
John Scaldwell 1678, Thomas Cooper 1695,  
Jacob Vanderlin 1704, Ralph Snow 1707,  
Bryan Turberville 1718, Countess of Gower 1721,  
Hayes Fortee's 1783, Jane Wakeling 1786,  
John Course 1786, Richard Robert 1807,  
Mary Oakley 1812, Elizabeth Lambert 1814,  
John Pickton 1821, Grace Fenner 1828,  
Mary Chapman 1831, Eleanor Dodson 1847,  
Elizabeth Edridge 1848, Robert Frost 1860,  
Cynthia Mosley 1936, Harry Clapham 1948



This, and a number of other pictures featured here, were taken by  
Will Morgan (willmorgan.net)

## ABOUT US

Our annual reports and accounts can be found at our website and also at the Charity Commission's website

In one way or another, we've been around and working in Lambeth since the 17th century.

We are an 'endowed' foundation, which means that our income is generated from historic assets. We use this money to fund our work.

Edmund Walcott, a local businessman, left property in his Will of 1667 to be used to raise money to improve the conditions of the poor of Lambeth.

Nearly three and a half centuries later the income from his legacy, and from our other endowments, is used to help Lambeth residents facing economic disadvantage. In 2010/11, our grants totalled £2,061,338.



*Detail from painting by Charlie Millar*

**OUR GRANTS IN 2010/11: £2,061,338**

## OUR FOCUS IS ON INDIVIDUALS, AND ON PERMANENT CHANGE

“The aim [of our four constituent charities] is to relieve poverty as it affects people living in Lambeth. Our approach is to be faithful to our historic purposes in ways which engage with modern forms of poverty and financial exclusion.”

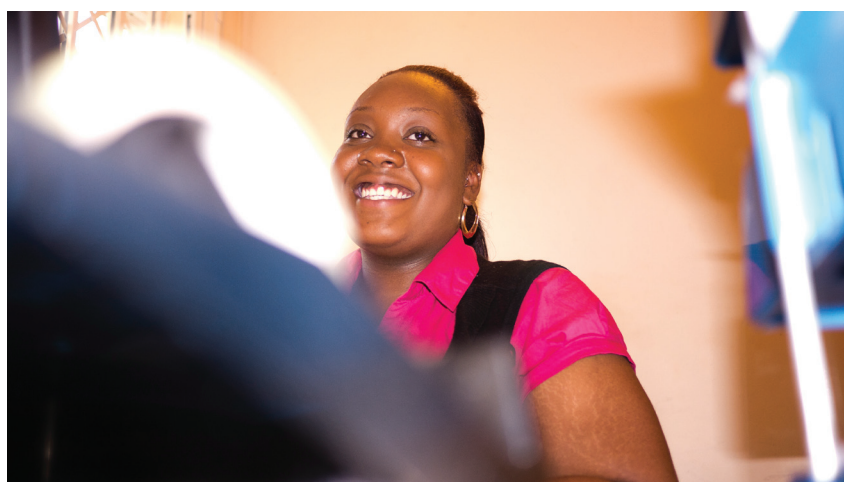
*Governors' Annual  
Report 2010/11*

We exist to help **individuals**, and our awards to organisations, schools and projects are a way of reaching them.

Our grants may be used only for people living in Lambeth, who are on low incomes.

We aim for permanent change, not temporary relief. Ultimately, our funding is aimed at helping people gain or improve the skills which will increase their ability to get and keep work. We believe this offers the best way of breaking cycles of deprivation.

Our grants approach these aims in a wide variety of ways, funding a broad range of initiatives and activities.



*Helena, a Walcot Apprentice, at work*

## WHAT POVERTY DOES TO PEOPLE

We operate in Lambeth, an area of inner London with more than a quarter of a million people.

It is one of the most densely populated places in the UK, and has more than twice the London population density.

The area is the 14th most deprived district in England (a relative worsening of position since 2008 when it was the 19th most deprived).

Material poverty limits opportunity. Nearly 4 million children are living in financial poverty in the UK (after housing costs). In Lambeth, 59% of children live in low income households.<sup>1</sup>

Children from poor households are far more likely to under-achieve, not only in school but throughout their lives. Educational attainment at school has a significant effect on earnings in later life. A lack of qualifications and skills makes it much harder to obtain secure employment. Achievement at school is a way in which people can escape the cycle of generational poverty.

Those who leave formal education with limited skills and without qualifications (and often with little self confidence) can make up for these in early adulthood with the right help. Of course, it is better to prevent this happening in the first place, and a large proportion of our grants target early and school years.

(1) Child Poverty Reduction Strategy 2011-14, Lambeth Council

## OUR APPROACH

In 2010/11 our grants totalled £2,061,338. We made 146 grants directly to individuals and 154 grants to organisations, schools and projects working with the individuals we exist to help.

Many of our grants to organisations are for two or three years. We do this in order to have greater impact and to help grantees escape the problems of constantly raising funds for effective projects.

We don't want to waste the time of potential grantees. Our website allows applicants to be sure they meet our criteria, and our two-stage application process for organisations does away with the need to complete detailed applications in the first instance.

**We focus on what our grants are likely to achieve.** Nearly always, this is a concern with success in education, training and employment, all of which make a person's long-term financial self-sufficiency more likely.

**We are fair.** We apply the same eligibility threshold in every case.

**We want to learn.** We are open to new ideas and welcome constructive feedback.

**We don't stigmatise.** The people we exist to help often have good reason to feel forgotten by the wider society. That is why we say we want to '*give a hand up, not a hand out*'. Our aim is to build self-confidence and the skills to enable grantees to build a better future for themselves and any dependants.



**WE ARE OPEN TO NEW IDEAS AND WELCOME CONSTRUCTIVE FEEDBACK**



## 'ADDED VALUE' GRANT MAKING

Our 'added value' grant making brings extra help to grantees

Some years ago we discovered that many of the students we had helped with course-related expenses had not found it possible to obtain high-quality careers advice, including interview skills and techniques. They, and many other grantees, were carrying large debt without a clear way of managing that.

Our 'added-value' approach means that we can provide every individual applicant with debt management and job-finding advice.

Under the same 'added value' programme we can provide organisations we consider funding with professional organisational and capacity building consultancy.

We fund all these services, which are free to those accessing them.



*Mark, a Walcot Apprentice*

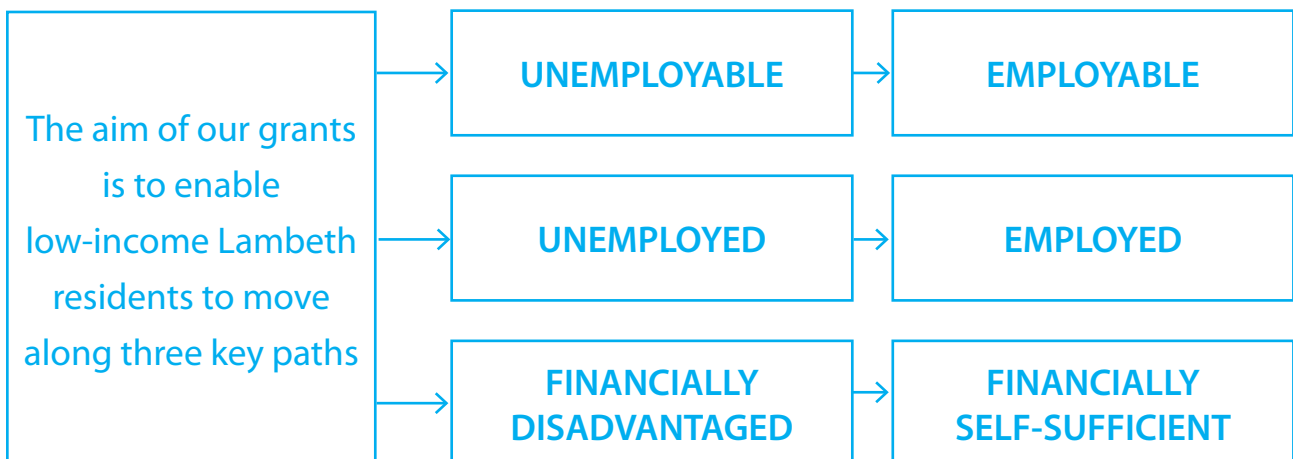
## WHAT WE FUND

We believe education  
- very broadly defined  
- to be one of the best  
routes out of cyclic and  
generational poverty.

We focus particularly  
on gaining literacy and  
numeracy skills, and the  
personal skills needed  
to obtain and hold on to  
work.

We fund activity which benefits **Lambeth residents** on the **lowest incomes** and we consider funding anything likely to improve future employability. Here are some examples.

- Equipping parents to actively contribute to their pre-school child's learning and development
- Helping primary stage children catch up in educational performance
- Helping teenagers develop literacy and numeracy and the social skills needed to plan for the world of work
- Assisting students in meeting the costs of further and higher education where the courses are likely to improve their future employability
- Funding projects which enable adults to enter and maintain employment





## SOME EXAMPLES

### **Chance UK**

£92,415 over 3 years

#### **What it funded**

Mentoring support for 30 primary school children with challenging and disruptive behaviour.

We heard about Chance UK's work in other parts of London, and got in touch with them. We are always interested to hear of successful projects elsewhere that may be replicated in Lambeth. This project, and some other projects we fund, have high 'per person' costs but also have evidence of good results.

### **SHINE**

£104,313 in 2010/11

#### **What it funded**

Saturday programmes for underachieving primary school children

There are six SHINE projects in Lambeth. SHINE on Saturdays, developed by the SHINE Trust, has been shown to be a catalyst for engaging school children who are underachieving. We like working with other grant makers where it brings benefits to those we are targeting. In this case our partnership with SHINE draws on its expertise in the area of improving educational attainment combined with our local knowledge.

### **Trinity Hospice Clapham**

£56,498 over 2 years

**What it funded** The Iris Allen Internship in Patient & Family Support and Rehabilitation

This special internship is enabling a Lambeth resident who meets our criteria to gain skills for future employment. Iris Allen died in 2010 and had served as a trustee and governor of our charities for many years. We are delighted to be able to honour her service by this grant.

### Every child a reader

£117,752

**What it funded** One-to-one or small group reading and maths tuition in 20 Lambeth primary schools

Each year we set indicative grant allocations for schools which we base on the relative financial disadvantage amongst their Lambeth-resident pupil population. Schools can apply to us for activity targeted at individual pupils meeting our criteria that would not be expected to be paid for from their devolved budget. Government cuts to this popular, effective programme resulted in several schools applying to the Foundation for funding toward this programme this year.

### Laurent Camara

£1,386 and £1,700

**What it funded** Summer work experience plus costs of completing A-levels; plus careers advice

This award illustrates how we provide valuable work experience, assist with study costs and provide professional careers advice. It also illustrates how we seek to help individuals and organisations at the same time: Laurent benefitted from the work experience and his employer, Brixton St Vincent's Community Centre, benefitted from a fully funded additional member of staff.



### **Helena Lawrence**

£60,000 over 3 years

**What it funded** A place on the Walcot Apprenticeship Scheme

Helena is part of our Walcot Apprentice Scheme, a programme we developed which began in March 2009 and runs for three and a half years. It provides consistent and high quality support to a small group of Lambeth young people meeting our criteria. Helena wants to become qualified in Youth Work. In addition to her salary, our award also meets Helena's child care costs.

### **Red Kite**

Originally £76,661 over 3 years

**What it funded**

Manage with Money Course: teaching adults financial literacy

We liked this application because of its proposal to teach financial literacy to adults in venues throughout Lambeth. Sometimes applications get through the assessment process but then run into trouble once the award has been made. This was an example of the project falling short of the agreed targets in Year 1. Following discussion with the grantee we decided to cease funding. In doing so we wanted to minimise the impact on those adults already involved and so offered a sum to help the project wind down in such a way as to best protect them. Not all organisations turn out to be able to deliver what they set out to do. Sometimes a project's plans are unexpectedly blown off course by staffing or other organisational difficulties. Where this happens we try to help but only where the possibility of getting a project fully back on track is realistic.

### **London Youth**

£10,000, then £120,000  
over 3 years

**What it funded** An intensive youth work project aimed at some of the hardest to reach

A second grant of £120k over three years was awarded when it became clear that the project, which is getting good results, would not be able to survive the public spending cuts. We do not exist to replace government funding but did not wish to see this project fail.

### **Granton Primary School**

£8,000

**What it funded** A Reading & Maths Café/ 'Family Learning Project'

Literacy and numeracy are vital to breaking generational cycles of poverty and we are always interested in applications which focus on these fundamental skills. We especially like approaches which involve parents, since this is likely to improve outcomes for the child and offer benefits to the parents.

### **Daycare Trust**

£4,983

**What it funded** A Childcare Information Campaign for low-income Lambeth students

Staff from Daycare Trust attended an event we ran in October 2010. The Childcare Information Campaign idea grew out of that event. Even though it is a 'small grant', we think it a timely and important one and have worked closely with Daycare Trust on the approach and systems for monitoring the impact. In addition, Daycare Trust offered to run a training event for advisers on the various, and often complicated, funding available for childcare. We hosted it and invited people from organisations that we fund or could potentially fund.

## **New Economics Foundation**

£29,907

**What it funded** Work placement project where expenses are paid in Brixton Pounds

This project is innovative and something of an experiment by a Lambeth-based national think tank that is interested in local people finding solutions to local problems and local people setting up and running local businesses. We would classify this as a 'risky grant' in the sense that many aspects are untested but we have confidence in the organisation running and monitoring the project and we hope that what is learnt will inform future grant-making. One aspect of the project involves an 'alternative currency' usable only in Brixton. We are pleased that the London Mutual Credit Union, supported by the Foundation, has become the Brixton Pound bank.

## **St Matthew's Project**

£120,000 over 3 years

**What it funded** Football project

We funded this project for three years and are now funding it for another three because of the good results in meeting grant targets and because of the project's referrals made to our individual grants programme. This organisation is dedicated to continuous improvement and it recently became a registered charity with the help of our capacity building project. It is also much more than a football project. It knows its participants well and is interested in their long-term education and employment prospects.

## GRANTS £10,000+, 2010/11

For the full list see our Annual Report and Accounts 2010/11

Grant to	Value	For
ADP Consultancy	£51,000	WF Capacity Building service
Archbishop Sumner School	£19,000	SHINE on Saturdays Project
Baytree Centre	£41,000	English Literacy Programme
Beatbullying	£32,000	The ReSync Project
Body & Soul	£11,000	Teen Spirit Programme
Brunel University	£35,000	Urban Scholars Programme
Centre 70	£57,000	WF Advice Project
Centrepont	£23,000	Getting Back on Track project
Chance UK	£30,000	Mentoring programme
Clapham & Lark Hall Collaborative	£22,000	Reading Recovery Programme
Community Education Forum	£25,000	Bridging the Gap Project
Early Education	£20,000	Work with Fathers in Early Years Settings
Ebony Horse Club	£100,000	Brixton Riding Centre
Eclectic Productions	£22,000	Brighter Futures in Lambeth Project
Fairbridge	£13,000	Positive Pathways Programme
Fenstanton Primary School	£10,000	Every Child a Reader
Foundation Training Company	£22,000	Support for ex-prisoners, other offenders
Fresh Visions	£25,000	The Motiv8 Project
Guild of Psychotherapists	£16,000	Low cost psychotherapy programme
Healthy Minds	£27,000	Peer Mediation and Circle Time
Home Start Lambeth	£12,000	The Start Right Project
Hyde Group	£46,000	New Wave Project
IndoAmerican Refugee Org (IRMO)	£26,000	English for Work Project
Ingeus	£63,000	WF Careers Advice Project
Ivorian Advice & Support Group	£12,000	Employment and English Language Project
Kings Avenue Primary School	£11,000	Every Child a Reader
Kingswood Primary School	£10,000	Every Child a Reader
Knights Youth Centre	£14,000	Walcot Apprenticeship Support Manager costs
Knights Youth Centre	£180,000	Costs of 9 Walcot Apprentices
LIFT for Learning	£16,000	DigiSmart Project
Lighthouse Group	£13,000	Youth Development Worker salary
Lilian Baylis Technology College	£14,000	Portuguese Support Worker
Little Starz Children's Centre	£31,000	Volunteer Project
London Mutual Credit Union	£83,000	Banking Inclusion Project
London Youth	£10,000	Positive Change Officer post
Mosaic Clubhouse	£29,000	Post in Education & Employment Unit
Music Therapy Lambeth	£30,000	Special Schools Project
Myatt's Field Park Project	£23,000	Cafe Project
New Economics Foundation	£30,000	Financial Inclusion/Employability Pilot Scheme



Grant to	Value	For
No 1 Performing Arts	£32,000	Counsellor, Fenstanton School
Oasis Children's Venture	£36,000	Volunteer Programme
Olmec	£13,000	Employment Support, Bolney Meadow Estate
Parents for Inclusion	£20,000	Transition Inclusion Group Project
Pegasus Opera Company	£30,000	Pegasus Opera Singing Academy
Photofusion	£23,000	Community Outreach Officer
Richard Atkins Primary School	£24,000	SHINE on Saturdays Project
Roots & Shoots	£13,000	Literacy, Numeracy & IT Project
St Stephen's Primary School	£30,000	SHINE on Saturdays Project
Status Employment	£35,000	Employment Officer Costs
Thames Reach Housing Assoc	£24,000	TRaVEL Employment Readiness Project
Trinity Hospice	£28,000	Iris Allen Internship
Working with Men	£32,000	Prevention and Transition Project



**Can you help us?** We nearly always have one or two people volunteering their skills for a period of time. Get in touch if you are interested in supporting our work by volunteering time and, or, special skill in areas such as monitoring and evaluation, communications, IT, historical research, law, fund-raising, education and life-long learning.

**WALCOT FOUNDATION**

127 Kennington Road London SE11 6SF 020 7735 1925

**walcotfoundation.org.uk**